

Test Report

No. CANEC1615375501

Date: 10 Aug 2016

Page 2 of 10

Test Results :

Test Part Description :

Specimen No.	SGS Sample ID	Description
SN1	CAN16-153755.001	Silver-grey metal ring(big)
SN2	CAN16-153755.002	Silver-grey metal ring(small)
SN3	CAN16-153755.003	Silver-grey metal
SN4	CAN16-153755.004	Silver-grey metal bead
SN5	CAN16-153755.005	Silver-grey metal ring
SN6	CAN16-153755.006	Brown paste

Remarks :

- (1) 1 mg/kg = 0.0001%
- (2) MDL = Method Detection Limit
- (3) ND = Not Detected (< MDL)
- (4) "-" = Not Regulated



RoHS Directive (EU) 2015/863 amending Annex II to Directive 2011/65/EU

- Test Method :
- (1) With reference to IEC 62321-5:2013, determination of Cadmium by ICP-OES.
 - (2) With reference to IEC 62321-5:2013, determination of Lead by ICP-OES.
 - (3) With reference to IEC 62321-4:2013, determination of Mercury by ICP-OES.
 - (4) With reference to IEC 62321:2008, determination of Hexavalent Chromium by Colorimetric Method using UV-Vis.
 - (5) With reference to IEC 62321-6:2015, determination of PBBs and PBDEs by GC-MS.

Test Item(s)	Limit	Unit	MDL	006
Cadmium (Cd)	100	mg/kg	2	ND
Lead (Pb)	1,000	mg/kg	2	ND
Mercury (Hg)	1,000	mg/kg	2	ND
Hexavalent Chromium (CrVI)	1,000	mg/kg	2	ND
Sum of PBBs	1,000	mg/kg	-	ND
Monobromobiphenyl	-	mg/kg	5	ND
Dibromobiphenyl	-	mg/kg	5	ND
Tribromobiphenyl	-	mg/kg	5	ND
Tetrabromobiphenyl	-	mg/kg	5	ND
Pentabromobiphenyl	-	mg/kg	5	ND
Hexabromobiphenyl	-	mg/kg	5	ND
Heptabromobiphenyl	-	mg/kg	5	ND



Unless otherwise agreed in writing, this document is issued by the Company subject to its General Conditions of Service printed overleaf, available on request or accessible at <http://www.sgs.com/en/Terms-and-Conditions.aspx> and, for electronic format documents, subject to Terms and Conditions for Electronic Documents at <http://www.sgs.com/en/Terms-and-Conditions/Terms-e-Documents.aspx>. Attention is drawn to the limitation of liability, indemnification and jurisdiction issues defined therein. Any holder of this document is advised that information contained hereon reflects the Company's findings at the time of its intervention only and within the limits of Client's instructions, if any. The Company's sole responsibility is to its Client and this document does not associate parties in a transaction from exercising all their rights and obligations under the transaction documents. This document cannot be reproduced except in full, without prior written approval of the Company. Any unauthorized alteration, forgery or falsification of the content or appearance of this document is unlawful and offenders may be prosecuted to the fullest extent of the law. Unless otherwise stated the results shown in this test report refer only to the sample(s) tested.

SGS (China) Testing Service Co., Ltd.
 88 Kefu Road, Science Park, Guangzhou Economic & Technology Development District, Guangzhou, China 510663 | (86-20) 82155555 | (86-20) 82075113 | www.sgs.com.cn
 中国·广州·经济技术开发区科学城科珠路198号 | 邮编: 510663 | (86-20) 82155555 | (86-20) 82075113 | sgs.china@sgs.com

Test Report

No. CANEC1615375501

Date: 10 Aug 2016

Page 3 of 10

Test Item(s)	Limit	Unit	MDL	006
Octabromobiphenyl	-	mg/kg	5	ND
Nonabromobiphenyl	-	mg/kg	5	ND
Decabromobiphenyl	-	mg/kg	5	ND
Sum of PBDEs	1,000	mg/kg	-	ND
Monobromodiphenyl ether	-	mg/kg	5	ND
Dibromodiphenyl ether	-	mg/kg	5	ND
Tribromodiphenyl ether	-	mg/kg	5	ND
Tetrabromodiphenyl ether	-	mg/kg	5	ND
Pentabromodiphenyl ether	-	mg/kg	5	ND
Hexabromodiphenyl ether	-	mg/kg	5	ND
Heptabromodiphenyl ether	-	mg/kg	5	ND
Octabromodiphenyl ether	-	mg/kg	5	ND
Nonabromodiphenyl ether	-	mg/kg	5	ND
Decabromodiphenyl ether	-	mg/kg	5	ND



Notes :

- (1) The maximum permissible limit is quoted from RoHS Directive (EU) 2015/863.
- (2) On 4 June 2015, Commission Directive (EU) 2015/863 was published in the Official Journal of the European Union (OJEU) to include the phthalates BBP, DBP, DEHP and DIBP into ANNEX II of the Rohs Recast Directive. The new law restricts each phthalate to no more than 0.1% in each homogeneous material of an electrical product.
- (3) The restriction of DEHP, BBP, DBP and DIBP shall apply to medical devices, including in vitro medical devices, and monitoring and control instruments, including industrial monitoring and control instruments, from 22 July 2021.
- (4) The restriction of DEHP, BBP, DBP and DIBP shall not apply to cables or spare parts for the repair, the reuse, the updating of functionalities or upgrading of capacity of EEE placed on the market before 22 July 2019, and of medical devices, including in vitro medical devices, and monitoring and control instruments, including industrial monitoring and control instruments, placed on the market before 22 July 2021.
- (5) The restriction of DEHP, BBP and DBP shall not apply to toys which are already subject to the restriction of DEHP, BBP and DBP through entry 51 of Annex XVII to Regulation (EC) No 1907/2006.

RoHS Directive (EU) 2015/863 amending Annex II to Directive 2011/65/EU

- Test Method :
- (1)With reference to IEC 62321-5:2013, determination of Cadmium by ICP-OES.
 - (2)With reference to IEC 62321-5:2013, determination of Lead by ICP-OES.
 - (3)With reference to IEC 62321-4:2013, determination of Mercury by ICP-OES.
 - (4)With reference to IEC 62321-7-1:2015 , determination of Hexavalent Chromium by Colorimetric Method using UV-Vis.



Unless otherwise agreed in writing, this document is issued by the Company subject to its General Conditions of Service printed overleaf, available on request or accessible at <http://www.sgs.com/en/Terms-and-Conditions.aspx> and, for electronic format documents, subject to Terms and Conditions for Electronic Documents at <http://www.sgs.com/en/Terms-and-Conditions/Terms-e-Documents.aspx>. Attention is drawn to the limitation of liability, indemnification and jurisdiction issues defined therein. Any holder of this document is advised that information contained hereon reflects the Company's findings at the time of its intervention only and within the limits of Client's instructions, if any. The Company's sole responsibility is to its Client and this document does not exonerate parties to a transaction from ascertaining all their rights and obligations under the transaction documents. This document cannot be reproduced except in full, without prior written approval of the Company. Any unauthorized alteration, forgery or falsification of the content or appearance of this document is unlawful and offenders may be prosecuted to the fullest extent of the law. Unless otherwise stated the results shown in this test report refer only to the sample(s) tested.

SGS (Shanghai) Inspection & Testing Co., Ltd. (SGS) is a member of the SGS Group. The SGS Group is a global leader in inspection, testing and certification services. SGS (Shanghai) Inspection & Testing Co., Ltd. is a member of the SGS Group. The SGS Group is a global leader in inspection, testing and certification services.

中国·广州·经济技术开发区科学城科珠路199号 邮编: 510663 1 (86-20) 82155555 1 (86-20) 82075113 www.sgs.com.cn
 中国·广州·经济技术开发区科学城科珠路199号 邮编: 510663 1 (86-20) 82155555 1 (86-20) 82075113 e sgs.china@sgs.com



Test Report

No. CANEC1615375501

Date: 10 Aug 2016

Page 6 of 10

F6906ZZ, 62800ZZ, 6705ZZ, 6706ZZ, 6707ZZ, 6708ZZ, 6709ZZ, F2.5-6, F3-8, F4-9, F4-10, F5-10, F5-11, F5-12, F6-12, F6-14, F7-13, F7-15, F7-17, F8-16, F8-19, F8-22, F9-17, F9-20, F10-17, F10-18, F12-21, F12-22, F12-23, 683, 684, 685, 686, 687, 688, 689, MR128, MR106, MR74, MR85, MR63, MR95, MR84, F6805ZZ, F16004ZZ, 62900ZZ, 6705-2RS, 6706-2RS, 6707-2RS, 6708-2RS, 6709-2RS



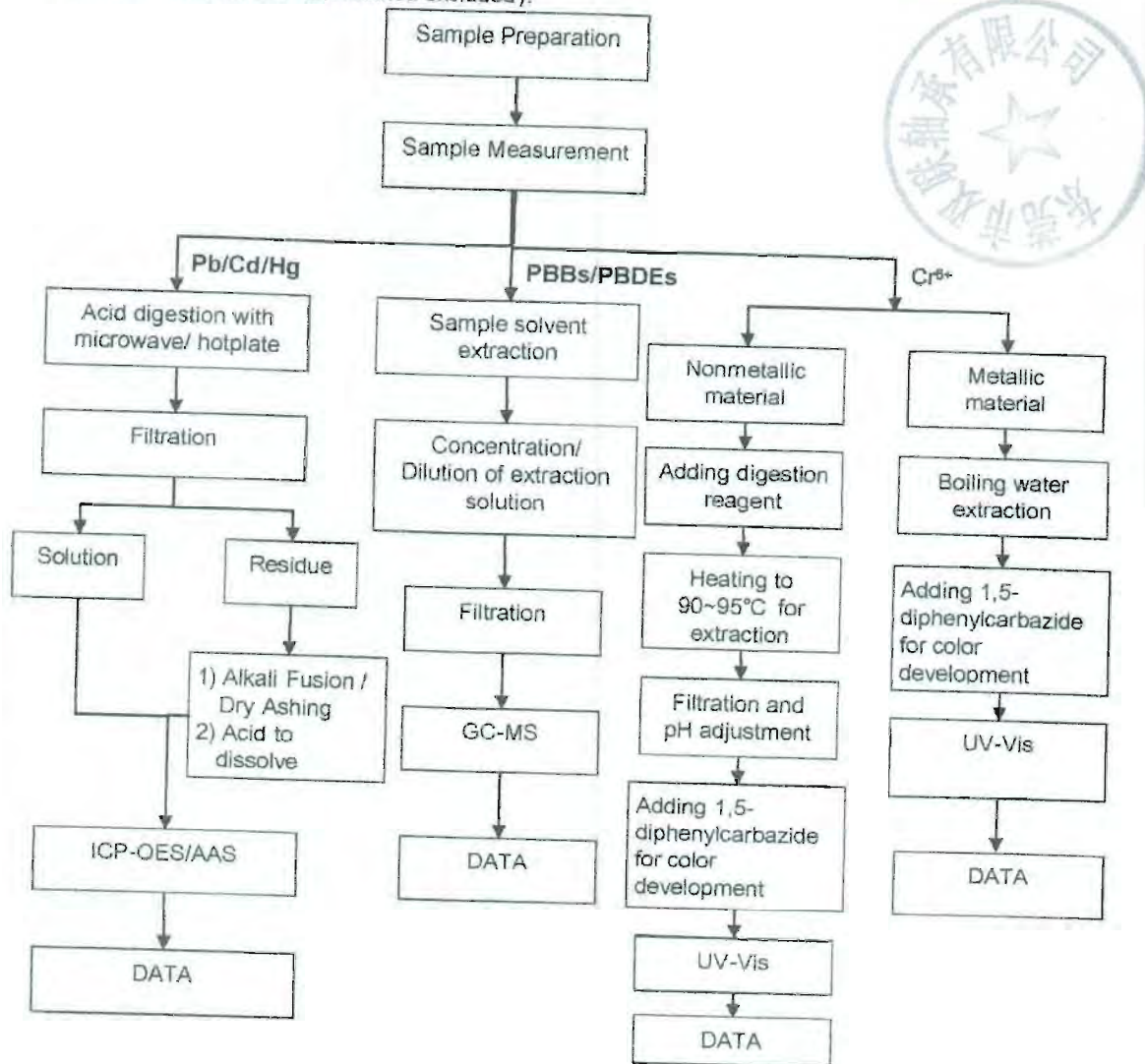
Unless otherwise agreed in writing, this document is issued by the Company subject to its General Conditions of Service printed overleaf, available on request or accessible at <http://www.sgs.com/en/Terms-and-Conditions.aspx> and, for electronic format documents, subject to Terms and Conditions for Electronic Documents at <http://www.sgs.com/en/Terms-and-Conditions/Terms-e-Documents.aspx>. Attention is drawn to the limitation of liability, indemnification and jurisdiction issues defined therein. Any holder of this document is advised that information contained hereon reflects the Company's findings at the time of its intervention only and within the limits of Client's instructions, if any. The Company's sole responsibility is to its Client and this document does not exonerate parties to a transaction from exercising all their rights and obligations under the transaction documents. This document cannot be reproduced except in full, without prior written approval of the Company. Any unauthorized alteration, forgery or falsification of the content or appearance of this document is unlawful and offenders may be prosecuted to the fullest extent of the law. Unless otherwise stated the results shown in this test report refer only to the sample(s) tested.

198 Kazuo Road, Science Park, Guangzhou Economic & Technology Development District, Guangzhou, China 510663 | (86-20) 82155555 | (86-20) 82075113 | www.sgs.com.cn
中国·广州·经济技术开发区科学城科珠路198号 邮编: 510663 | (86-20) 82155555 | (86-20) 82075113 | e.sgs.china@sgs.com

ATTACHMENTS

Pb/Cd/Hg/Cr⁶⁺/PBBs/PBDEs Testing Flow Chart

- 1) Name of the person who made testing: Edith Zhang / Sunny Hu
- 2) Name of the person in charge of testing: Bella Wang / Qiong Liu
- 3) These samples were dissolved totally by pre-conditioning method according to below flow chart (Cr⁶⁺ and PBBs/PBDEs test method excluded).



Unless otherwise agreed in writing, this document is issued by the Company subject to its General Conditions of Service printed overleaf, available on request or accessible at <http://www.sgs.com/en/Terms-and-Conditions.aspx> and, for electronic format documents, subject to Terms and Conditions for Electronic Documents at <http://www.sgs.com/en/Terms-and-Conditions/Terms-e-Documents.aspx>. Attention is drawn to the limitation of liability, indemnification and jurisdiction issues defined therein. Any holder of this document is advised that information contained hereon reflects the Company's findings at the time of its intervention only and within the limits of Client's instructions, if any. The Company's sole responsibility is to its Client and this document does not exonerate parties to a transaction from exercising all their rights and obligations under the transaction documents. This document cannot be reproduced except in full, without prior written approval of the Company. Any unauthorized alteration, forgery or falsification of the content or results shown in this test report refer only to the sample(s) tested.

SGS (Shanghai) Inspection & Testing Co., Ltd.
 200001 Shanghai, P.R. China

198 Kietze Road, Science Park, Guangzhou Economic & Technology Development District, Guangzhou, China. 510663 | (86-20) 82155555 | (86-20) 82075113 | www.sgs.com.cn
 中国·广州·经济技术开发区科学城科珠路198号 邮编: 510663 | (86-20) 82155555 | (86-20) 82075113 | sgs.china@sgs.com

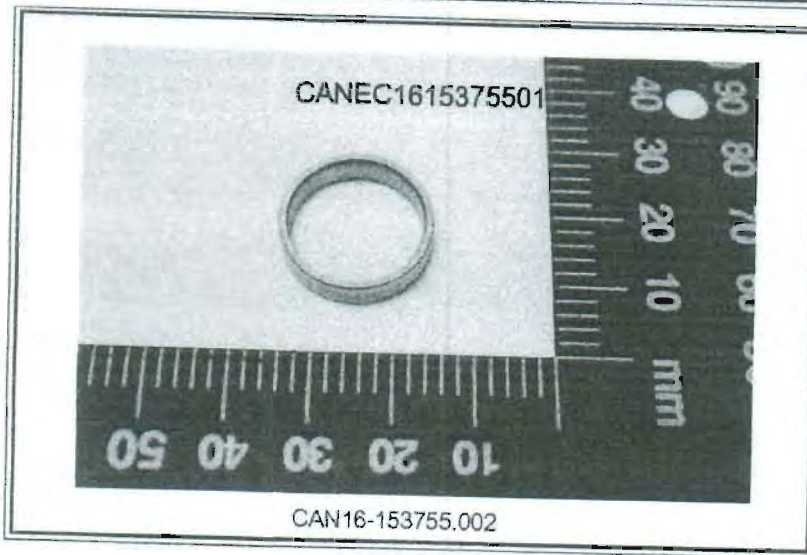
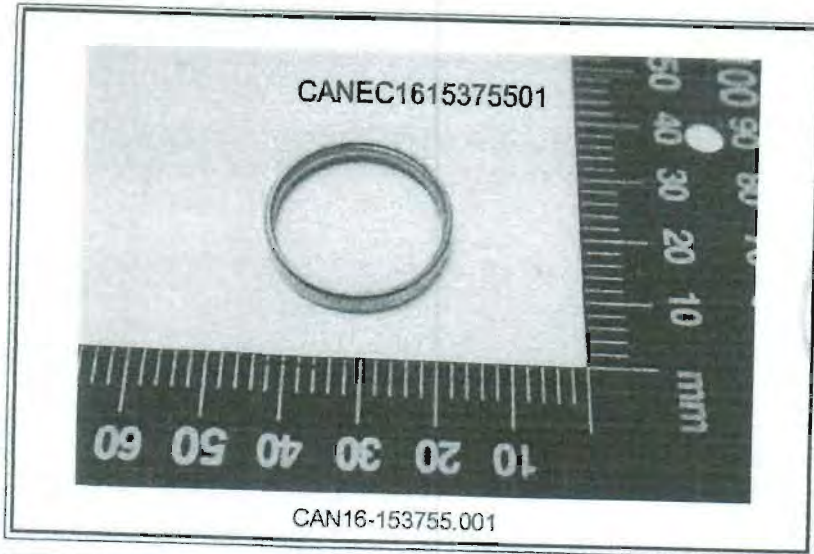
Test Report

No. CANEC1615375501

Date: 10 Aug 2016

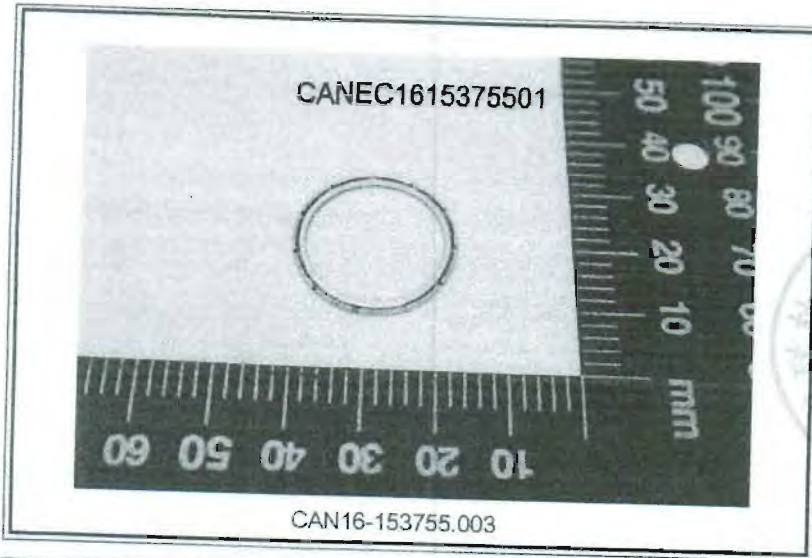
Page 8 of 10

Sample photo:



Unless otherwise agreed in writing, this document is issued by the Company subject to its General Conditions of Service printed overleaf, available on request or accessible at <http://www.sgs.com/en/Terms-and-Conditions.aspx> and, for electronic format documents, subject to Terms and Conditions for Electronic Documents at <http://www.sgs.com/en/Terms-and-Conditions/Terms-e-Documents.aspx>. Attention is drawn to the limitation of liability, indemnification and jurisdiction issues defined therein. Any holder of this document is advised that information contained herein reflects the Company's findings at the time of its intervention only and within the limits of Client's instructions, if any. The Company's sole responsibility is to its Client and this document does not guarantee carries to a transaction from exercising all their rights and obligations under the transaction documents. This document cannot be reproduced except in full, without prior written approval of the Company. Any unauthorized alteration, forgery or falsification of the content or results shown in this test report refer only to the sample(s) tested.

SGS-CTL (Shanghai) General Supervision & Inspection Co., Ltd. (Shanghai Branch)
180 Kechu Road, Songmachi Park, Guangzhou Economic & Technology Development Zone, Guangzhou, China 510663 | (86-20) 82155555 | (86-20) 82075113 | www.sgsgroup.com.cn
中国·广州·经济技术开发区科学城科珠路180号 邮编: 510663 | (86-20) 82155555 | (86-20) 82075113 | sgs.china@sgs.com



Unless otherwise agreed in writing, this document is issued by the Company subject to its General Conditions of Service printed overleaf, available on request or accessible at <http://www.sgs.com/en/Terms-and-Conditions.aspx> and, for electronic format documents, subject to Terms and Conditions for Electronic Documents at <http://www.sgs.com/en/Terms-and-Conditions-Terms-e-Documents.aspx>. Attention is drawn to the limitation of liability, indemnification and jurisdiction issues defined therein. Any holder of this document is advised that information contained hereon reflects the Company's findings at the time of its intervention only and within the limits of Client's instructions, if any. The Company's sole responsibility is to its Client and this document does not exonerate parties to a transaction from exercising all their rights and obligations under the transaction documents. This document cannot be reproduced except in full, without prior written approval of the Company. Any unauthorized alteration, forgery or falsification of the content or appearance of this document is unlawful and offenders may be prosecuted to the fullest extent of the law. Unless otherwise stated the results shown in this test report refer only to the sample(s) tested.

sgs.com To check the authenticity of printing (inked non-inked) & pen/brush: www.meritof.com/kongsheng (86-20) 82075113 or www: CA, ca.china.sgs.com

198 Kexue Road, Sotekad Park, Guangzhou Economic & Technology Development District, Guangzhou, China 510663 | (86-20) 82155555 | (86-20) 82075113 | www.sgs.com
中国·广州·经济技术开发区科学城科珠路198号 邮编: 510663 | (86-20) 82155555 | (86-20) 82075113 | sgs.china@sgs.com

Test Report (SVHC)

No. CANEC1705363601

Date: 11 Apr 2017

Page 1 of 12

The following sample(s) was/were submitted and identified on behalf of the clients as : Bearing

SGS Job No. : CP17-013845 - GZ

Model No. : 6806ZZ

Client Ref. Info. : SEE REMARK

Supplier :

Manufacturer :

Date of Sample Received : 01 Apr 2017

Testing Period : 01 Apr 2017 - 08 Apr 2017

Test Requested : As requested by client, SVHC screening is performed according to:
(i) Fifty five (55) inorganic substances and additional eleven (11) organic metallic substances in the Candidate List of Substances of Very High Concern (SVHC) for authorization published by European Chemicals Agency (ECHA) on and before Jan 12, 2017 regarding Regulation (EC) No 1907/2006 concerning the REACH.

Test Results : Please refer to next page(s).

Summary :

According to the specified scope and evaluation screening, the test results of SVHC are $\leq 0.1\%$ (w/w) in the submitted sample.	PASS
---	------

Signed for and on behalf of
SGS-CSTC Standards Technical Services Co., Ltd. Guangzhou Branch



Unless otherwise agreed in writing, this document is issued by the Company subject to its General Conditions of Service printed overleaf, available on request or accessible at <http://www.sgs.com/en/Terms-and-Conditions.aspx> and, for electronic format documents, subject to Terms and Conditions for Electronic Documents at <http://www.sgs.com/en/Terms-and-Conditions/Terms-e-Documents.aspx>. Attention is drawn to the limitation of liability, indemnification and jurisdiction issues defined therein. Any holder of this document is advised that information contained hereon reflects the Company's findings at the time of its intervention only and within the limits of Client's instructions, if any. The Company's sole responsibility is to its Client and this document does not exonerate parties to a transaction from exercising all their rights and obligations under the transaction documents. This document cannot be reproduced except in full, without prior written approval of the Company. Any unauthorized alteration, forgery or falsification of the content or appearance of this document is unlawful and offenders may be prosecuted to the fullest extent of the law. Unless otherwise stated the results shown in this test report refer only to the sample(s) tested.

Attention: To check the authenticity of testing / inspection report & certificate, please contact us at telephone: (86-755) 8307 1443, or email: CN.Doccheck@sgs.com

SGS-CSTC Standards Technical Services Co., Ltd.
Guangzhou Branch (Guangzhou) Chemical Laboratory

198 Kexu Road, Sointech Park, Guangzhou Economic & Technology Development District, Guangzhou, China 510663 t (86-20) 82155555 f (86-20) 82075113 www.sgs.com
中国·广州·经济技术开发区科学城科珠路198号 邮编: 510663 t (86-20) 82155555 f (86-20) 82075113 e sgs.china@sgs.com

Test Report (SVHC)

No. CANEC1705363601

Date: 11 Apr 2017

Page 2 of 12

Remark :

(1) The chemical analysis of specified SVHC is performed by means of currently available analytical techniques against the following SVHC related documents published by ECHA: <http://echa.europa.eu/web/guest/candidate-list-table>
These lists are under evaluation by ECHA and may subject to change in the future.

(2) Concerning article(s):

In accordance with Regulation (EC) No 1907/2006, any EU producer or importer of articles shall notify ECHA, in accordance with paragraph 4 of Article 7, if a substance meets the criteria in Article 57 and is identified in accordance with Article 59(1) of the Regulation, if (a) the substance in the Candidate List is present in those articles in quantities totaling over one tonne per producer or importer per year; and (b) the substance in the Candidate List is present in those articles above a concentration of 0.1% weight by weight (w/w).

Article 33 of Regulation (EC) No 1907/2006 requires supplier of an article containing a substance meeting the criteria in Article 57 and identified in accordance with Article 59(1) in a concentration above 0.1% weight by weight (w/w) shall provide the recipient of the article with sufficient information, available to the supplier, to allow safe use of the article including, as a minimum, the name of that substance in the Candidate List.

SGS adopts the ruling of the Court of Justice of the European Union on the definition of an article under REACH unless indicated otherwise. Detail explanation is available at the following link:

<http://www.sgs.com/-/media/global/documents/technical-documents/technical-bulletins/sgs-crs-position-statement-on-svhc-in-articles-a4-en-16-06.pdf?la=en>

(3) Concerning material(s):

Test results in this report are based on the tested sample. This report refers to testing result of tested sample submitted as homogenous material(s). In case such material is being used to compose an article, the results indicated in this report may not represent SVHC concentration in such article. If this report refers to testing result of composite material group by equal weight proportion, the material in each composite test group may come from more than one article.

If the sample is a substance or mixture, and it directly exports to EU, client has the obligation to comply with the supply chain communication obligation under Article 31 of Regulation (EC) No. 1907/2006 and the conditions of Authorization of substance of very high concern included in the Annex XIV of the Regulation (EC) No. 1907/2006.

(4) Concerning substance and preparation:

If a SVHC is found over 0.1% (w/w) and/or the specific concentration limit which is set in Regulation (EC) No 1272/2008 and No 790/2009, client is suggested to prepare a Safety Data Sheet (SDS) against the SVHC to comply with the supply chain communication obligation under Regulation (EC) No 1907/2006, in which:



Unless otherwise agreed in writing, this document is issued by the Company subject to its General Conditions of Service printed overleaf, available on request or accessible at <http://www.sgs.com/en/Terms-and-Conditions.aspx> and, for electronic formal documents, subject to Terms and Conditions for Electronic Documents at <http://www.sgs.com/en/Terms-and-Conditions/Terms-e-Documents.aspx>. Attention is drawn to the limitation of liability, indemnification and jurisdiction issues defined therein. Any holder of this document is advised that information contained hereon reflects the Company's findings at the time of its intervention only and within the limits of Client's instructions, if any. The Company's sole responsibility is to its Client and this document does not exonerate parties to a transaction from exercising all their rights and obligations under the transaction documents. This document cannot be reproduced except in full, without prior written approval of the Company. Any unauthorized alteration, forgery or falsification of the content or appearance of this document is unlawful and offenders may be prosecuted to the fullest extent of the law. Unless otherwise stated the results shown in this test report refer only to the sample(s) tested.

Attention: To check the authenticity of testing/inspection report & certificate, please contact us at telephone: (86-755) 8367 1443, or email: CN_DocCheck@sgs.com

SGS-CTI
Guangzhou Economic & Technology Development District Science City Laboratory

136 Kezhu Road, Science City, Guangzhou Economic & Technology Development District, Guangzhou, China 510663 t (86-20) 82155555 f (86-20) 82075113 www.sgs.com
中国·广州·经济技术开发区科学城科珠路198号 邮编: 510663 t (86-20) 82155555 f (86-20) 82075113 e sgs.china@sgs.com

**Test Report
(SVHC)**

No. CANEC1705363601

Date: 11 Apr 2017

Page 3 of 12

- a substance that is classified as hazardous under the CLP Regulation (EC) No 1272/2008.
- a mixture that is classified as dangerous according Dangerous Preparations Directive 1999/45/EC or classified as hazardous under the CLP Regulation (EC) No 1272/2008, when their concentrations are equal to, or greater than, those defined in the Article 3(3) of 1999/45/EC or the lower values given in Part 3 of Annex VI of Regulation (EC) No. 1272/2008; or
- a mixture is not classified as dangerous under Directive 1999/45/EC, but contains either:
 - (a) a substance posing human health or environmental hazards in an individual concentration of $\geq 1\%$ by weight for mixtures that are solid or liquids (i.e., non-gaseous mixtures) or $\geq 0.2\%$ by volume for gaseous mixtures; or
 - (b) a substance that is PBT, or vPvB in an individual concentration of $\geq 0.1\%$ by weight for mixtures that are solid or liquids (i.e., non-gaseous mixtures); or
 - (c) a substance on the SVHC candidate list (for reasons other than those listed above), in an individual concentration of $\geq 0.1\%$ by weight for non-gaseous mixtures; or
 - (d) a substance for which there are Europe-wide workplace exposure limits.

(5) If a SVHC is found over the reporting limit, client is suggested to identify the component which contains the SVHC and the exact concentration of the SVHC by requesting further quantitative analysis from the laboratory.

Test Sample :

Sample Description :

Specimen No.	SGS Sample ID	Description
SN1	CAN17-053636.001	Silver-gray metal(a)+silver-gray metal(b)+silver-gray metal(c)+silver-gray metal(d)+silver-gray metal(e)

Test Method :

SGS In-House method- GZTC CHEM-TOP-092-01, Analyzed by ICP-OES, UV-VIS.



Unless otherwise agreed in writing, this document is issued by the Company subject to its General Conditions of Service printed overleaf, available on request or accessible at <http://www.sgs.com/en/Terms-and-Conditions.aspx> and, for electronic format documents, subject to Terms and Conditions for Electronic Documents at <http://www.sgs.com/en/Terms-and-Conditions/Terms-e-Documents.aspx>. Attention is drawn to the limitation of liability, indemnification and jurisdiction issues defined therein. Any holder of this document is advised that information contained hereon reflects the Company's findings at the time of its intervention only and within the limits of Client's instructions, if any. The Company's sole responsibility is to its Client and this document does not exonerate parties to a transaction from exercising all their rights and obligations under the transaction documents. This document cannot be reproduced except in full, without prior written approval of the Company. Any unauthorized alteration, forgery or falsification of the content or appearance of this document is unlawful and offenders may be prosecuted to the fullest extent of the law. Unless otherwise stated the results shown in this test report refer only to the sample(s) tested.

Attention: To check the authenticity of testing/inspection report & certificate, please contact us at telephone: (86-755) 8307 1442, or email: CN.Doccheck@sgs.com

SGS-CTC
Guangzhou Branch
Guangzhou Branch Chemical Laboratory

198 Kexhu Road, Science Park Guangzhou Economic & Technology Development District, Guangzhou, China 510663 t (86-20) 82155555 f (86-20) 82075113 www.sgs.com.cn
中国·广州·经济技术开发区科学城科珠路198号 邮编: 510663 t (86-20) 82155555 f (86-20) 82075113 e sgs.china@sgs.com

**Test Report
(SVHC)**

No. CANEC1705363601

Date: 11 Apr 2017

Page 4 of 12

Test Result: (Substances in the Candidate List of SVHC)

Batch	Substance Name	CAS No.	001 Concentration (%)	RL (%)
-	All tested SVHC in candidate list	-	ND	-

Notes :

1. The table above only shows detected SVHC, and SVHC that below RL are not reported. Please refer to Appendix for the full list of tested SVHC.
2. RL = Reporting Limit. All RL are based on homogenous material. ND = Not detected (lower than RL), ND is denoted on the SVHC substance.
3. *The test result is based on the calculation of selected element(s) / marker(s) and to the worst-case scenario. For detail information, please refer to the SGS REACH website: www.reach.sgs.com/substance-of-very-high-concern-analysis-information-page.htm.
4. RL = 0.005% is evaluated for element (i.e. cobalt, arsenic, lead, chromium (VI), aluminum, zirconium, boron, strontium, zinc, antimony, titanium, cadmium and barium respectively), except molybdenum RL=0.0005%, boron RL=0.0025% (only for Lead bis(tetrafluoroborate)).
5. Calculated concentration of boric compounds are based on the water extractive boron by ICP-OES.
6. Composite test has been performed in equal proportion for the components/material per client requested. And the result is calculated using the minimum sample weight.



Unless otherwise agreed in writing, this document is issued by the Company subject to its General Conditions of Service printed overleaf, available on request or accessible at <http://www.sgs.com/en/Terms-and-Conditions.aspx> and, for electronic format documents, subject to Terms and Conditions for Electronic Documents at <http://www.sgs.com/en/Terms-and-Conditions/Terms-e-Documents.aspx>. Attention is drawn to the limitation of liability, indemnification and jurisdiction issues defined therein. Any holder of this document is advised that information contained hereon reflects the Company's findings at the time of its intervention only and within the limits of Client's instructions, if any. The Company's sole responsibility is to its Client and this document does not exonerate parties to a transaction from exercising all their rights and obligations under the transaction documents. This document cannot be reproduced except in full, without prior written approval of the Company. Any unauthorized alteration, forgery or falsification of the content or appearance of this document is unlawful and offenders may be prosecuted to the fullest extent of the law. Unless otherwise stated the results shown in this test report refer only to the sample(s) tested.

Attention: To check the authenticity of testing/inspection report & certificate, please contact us at telephone: (86-755) 8307 1443, or email: CN_Qoscheck@sgs.com

SGS-CTI
Guangzhou Branch (Guangzhou Economic & Technology Development District)

198 Kezhu Road, Science Park Guangzhou Economic & Technology Development District, Guangzhou, China 510663 | (86-20) 82155555 | (86-20) 82075113 | www.sgs.com
中国·广州·经济技术开发区科学城科珠路198号 邮编: 510663 | (86-20) 82155555 | (86-20) 82075113 | sgs.china@sgs.com

Test Report (SVHC)

No. CANEC1705363601

Date: 11 Apr 2017

Page 5 of 12

Appendix

Full list of tested SVHC:

Batch	No.	Substance Name	CAS No.	RL (%)
I	1	Cobalt dichloride*	7646-79-9	0.005
I	2	Diarsenic pentaoxide*	1303-28-2	0.005
I	3	Diarsenic trioxide*	1327-53-3	0.005
I	4	Lead hydrogen arsenate*	7784-40-9	0.005
I	5	Sodium dichromate*	7789-12-0, 10588-01-9	0.005
I	6	Triethyl arsenate*	15606-95-8	0.005
II	7	Lead chromate*	7758-97-6	0.005
II	8	Lead chromate molybdate sulphate red (C.I. Pigment Red 104)*	12656-85-8	0.005
II	9	Lead sulfochromate yellow (C.I. Pigment Yellow 34)*	1344-37-2	0.005
III	10	Ammonium dichromate*	7789-09-5	0.005
III	11	Boric acid*	10043-35-3, 11113-50-1	0.005
III	12	Disodium tetraborate, anhydrous*	1303-96-4, 1330-43-4, 12179-04-3	0.005
III	13	Potassium chromate*	7789-00-6	0.005
III	14	Potassium dichromate*	7778-50-9	0.005
III	15	Sodium chromate*	7775-11-3	0.005
III	16	Tetraboron disodium heptaoxide, hydrate*	12267-73-1	0.005
IV	17	Chromic acid, Oligomers of chromic acid and dichromic acid, Dichromic acid*	7738-94-5 - 13530-68-2	0.005
IV	18	Chromium trioxide*	1333-82-0	0.005



SGS-CSI
Guangzhou Special Economic Zone Laboratory

Unless otherwise agreed in writing, this document is issued by the Company subject to its General Conditions of Service printed overleaf, available on request or accessible at <http://www.sgs.com/en/Terms-and-Conditions.aspx> and, for electronic format documents, subject to Terms and Conditions for Electronic Documents at <http://www.sgs.com/en/Terms-and-Conditions/Terms-e-Documents.aspx>. Attention is drawn to the limitation of liability, indemnification and jurisdiction issues defined therein. Any holder of this document is advised that information contained hereon reflects the Company's findings at the time of its intervention only and within the limits of Client's instructions, if any. The Company's sole responsibility is to its Client and this document does not exonerate parties to a transaction from exercising all their rights and obligations under the transaction documents. This document cannot be reproduced or copied in any form or by any means, electronic or mechanical, including photocopying, recording, or by any information storage and retrieval system, without prior written approval of the Company. Any unauthorized alteration, forgery or falsification of the content or appearance of this document is unlawful and offenders may be prosecuted to the fullest extent of the law. Unless otherwise stated the results shown in this test report refer only to the sample(s) tested.

Attention: To check the authenticity of testing/inspection report & certificate, please contact us at telephone: (86-753) 8307 1443, or email: CN_Doccheck@sgs.com

198 Kezhu Road, Science Park Guangzhou Economic & Technology Development District, Guangzhou, China 510663 t (86-20) 82155555 f (86-20) 82075113 www.sgs.com.cn
中国·广州·经济技术开发区科学城科珠路198号 邮编: 510663 t (86-20) 82155555 f (86-20) 82075113 e sgs.china@sgs.com

Test Report (SVHC)

No. CANEC1705363601

Date: 11 Apr 2017

Page 6 of 12

Appendix

Full list of tested SVHC:

Batch	No.	Substance Name	CAS No.	RL (%)
IV	19	Cobalt(II) carbonate*	513-79-1	0.005
IV	20	Cobalt(II) diacetate*	71-48-7	0.005
IV	21	Cobalt(II) dinitrate*	10141-05-6	0.005
IV	22	Cobalt(II) sulphate*	10124-43-3	0.005
V	23	Strontium chromate*	7789-06-2	0.005
VI	24	Aluminosilicate Refractory Ceramic Fibres *	650-017-00-8 (Index no.)	0.005
VI	25	Arsenic acid*	7778-39-4	0.005
VI	26	Calcium arsenate*	7778-44-1	0.005
VI	27	Dichromium tris(chromate) *	24613-89-6	0.005
VI	28	Lead diazide, Lead azide*	13424-46-9	0.005
VI	29	Lead dipicrate*	6477-64-1	0.005
VI	30	Lead styphnate*	15245-44-0	0.005
VI	31	Pentazinc chromate octahydroxide*	49663-84-5	0.005
VI	32	Potassium hydroxyoctaoxodizincatedichromate*	11103-86-9	0.005
VI	33	Trilead diarsenate*	3687-31-8	0.005
VI	34	Zirconia Aluminosilicate Refractory Ceramic Fibres*	650-017-00-8 (Index no.)	0.005
VII	35	Diboron trioxide*	1303-86-2	0.005
VII	36	Lead(II) bis(methanesulfonate)*	17570-76-2	0.005
VIII	37	[Phthalato(2-)]dioxotrilead*	69011-06-9	0.005
VIII	38	Acetic acid, lead salt, basic*	51404-69-4	0.005



Unless otherwise agreed in writing, this document is issued by the Company subject to its General Conditions of Service printed overleaf, available on request or accessible at <http://www.sgs.com/en/Terms-and-Conditions.aspx> and, for electronic format documents, subject to Terms and Conditions for Electronic Documents at <http://www.sgs.com/en/Terms-and-Conditions/Terms-a-Document.aspx>. Attention is drawn to the limitation of liability, indemnification and jurisdiction issues defined therein. Any holder of this document is advised that information contained hereon reflects the Company's findings at the time of its intervention only and within the limits of Client's instructions, if any. The Company's sole responsibility is to its Client and this document does not exonerate parties to a transaction from exercising all their rights and obligations under the transaction documents. This document cannot be reproduced except in full, without prior written approval of the Company. Any unauthorized alteration, forgery or falsification of the content or appearance of this document is unlawful and offenders may be prosecuted to the fullest extent of the law. Unless otherwise stated the results shown in this test report refer only to the sample(s) tested.

Attention: To check the authenticity of testing/inspection report & certificate, please contact us at telephone: (86-755) 8307 1443, or email: CN.Doccheck@sgs.com

198 Kozhu Road, Scientific Park Guangzhou Economic & Technology Development District, Guangzhou, China 510663
中国·广州·经济技术开发区科学城科珠路198号

198 Kozhu Road, Scientific Park Guangzhou Economic & Technology Development District, Guangzhou, China 510663 | (86-20) 82155555 | (86-20) 82075113 | www.sgs.com
中国·广州·经济技术开发区科学城科珠路198号 | 邮编: 510663 | (86-20) 82155555 | (86-20) 82075113 | sgs.china@sgs.com

Test Report (SVHC)

No. CANEC1705363601

Date: 11 Apr 2017

Page 7 of 12

Appendix

Full list of tested SVHC:

Batch	No.	Substance Name	CAS No.	RL (%)
VIII	39	Dioxobis(stearato)trilead*	12578-12-0	0.005
VIII	40	Fatty acids, C16-18, lead salts*	91031-62-8	0.005
VIII	41	Lead bis(tetrafluoroborate)*	13814-96-5	0.005
VIII	42	Lead cyanamidate*	20837-86-9	0.005
VIII	43	Lead dinitrate*	10099-74-8	0.005
VIII	44	Lead monoxide*	1317-36-8	0.005
VIII	45	Lead oxide sulfate*	12036-76-9	0.005
VIII	46	Lead tetroxide (orange lead)*	1314-41-6	0.005
VIII	47	Lead titanium trioxide*	12060-00-3	0.005
VIII	48	Lead titanium zirconium oxide*	12626-81-2	0.005
VIII	49	Pentalead tetraoxide sulphate*	12065-90-6	0.005
VIII	50	Pyrochlore, antimony lead yellow*	8012-00-8	0.005
VIII	51	Silicic acid, barium salt, lead-doped*	68784-75-8	0.005
VIII	52	Silicic acid, lead salt*	11120-22-2	0.005
VIII	53	Sulfurous acid, lead salt, dibasic*	62229-08-7	0.005
VIII	54	Tetraethyllead*	78-00-2	0.005
VIII	55	Tetralead trioxide sulphate*	12202-17-4	0.005
VIII	56	Trilead bis(carbonate)dihydroxide (basic lead carbonate)*	1319-46-6	0.005
VIII	57	Trilead dioxide phosphonate*	12141-20-7	0.005
IX	58	Cadmium oxide*	1306-19-0	0.005
IX	59	Cadmium*	7440-43-9	0.005



Unless otherwise agreed in writing, this document is issued by the Company subject to its General Conditions of Service printed overleaf, available on request or accessible at <http://www.sgs.com/en/Terms-and-Conditions.aspx> and, for electronic format documents, subject to Terms and Conditions for Electronic Documents at <http://www.sgs.com/en/Terms-and-Conditions/Terms-e-Documents.aspx>. Attention is drawn to the limitation of liability, indemnification and jurisdiction issues defined therein. Any holder of this document is advised that information contained hereon reflects the Company's findings at the time of its intervention only and within the limits of Client's instructions, if any. The Company's sole responsibility is to its Client and this document does not exonerate parties to a transaction from exercising all their rights and obligations under the transaction documents. This document cannot be reproduced except in full, without prior written approval of the Company. Any unauthorized alteration, forgery or falsification of the content or appearance of this document is unlawful and offenders may be prosecuted to the fullest extent of the law. Unless otherwise stated the results shown in this test report refer only to the sample(s) tested.

Attention: To check the authenticity of testing/inspection report & certificate, please contact us at telephone: (86-755) 8307 1443, or email: CN.Descheck@sgs.com

SGS (China) Inspection & Testing Services Co., Ltd.
Guangzhou Branch (Guangzhou) General Laboratory

198 Kezhu Road, Science Park Guangzhou Economic & Technology Development District, Guangzhou, China 510663 t (86-20) 82155555 f (86-20) 82075113 www.sgs.com.cn
中国·广州·经济技术开发区科学城科珠路198号 邮编: 510663 t (86-20) 82155555 f (86-20) 82075113 e sgs.china@sgs.com

**Test Report
(SVHC)**

No. CANEC1705363601

Date: 11 Apr 2017

Page 8 of 12

Appendix

Full list of tested SVHC:

Batch	No.	Substance Name	CAS No.	RL (%)
X	60	Cadmium sulphide*	1306-23-6	0.005
X	61	Lead di(acetate)*	301-04-2	0.005
XI	62	Cadmium chloride*	10108-64-2	0.005
XI	63	Sodium perborate; perboric acid, sodium salt*	-	0.005
XI	64	Sodium peroxometaborate*	7632-04-4	0.005
XII	65	Cadmium fluoride*	7790-79-6	0.005
XII	66	Cadmium sulphate*	10124-36-4, 31119-53-6	0.005



Unless otherwise agreed in writing, this document is issued by the Company subject to its General Conditions of Service printed overleaf, available on request or accessible at <http://www.sgs.com/en/Terms-and-Conditions.aspx> and, for electronic format documents, subject to Terms and Conditions for Electronic Documents at <http://www.sgs.com/en/Terms-and-Conditions/Terms-e-Documents.aspx>. Attention is drawn to the limitation of liability, indemnification and jurisdiction issues defined therein. Any holder of this document is advised that information contained hereon reflects the Company's findings at the time of its intervention only and within the limits of Client's instructions, if any. The Company's sole responsibility is to its Client and this document does not exonerate parties to a transaction from exercising all their rights and obligations under the transaction documents. This document cannot be reproduced except in full, without prior written approval of the Company. Any unauthorized alteration, forgery or falsification of the content or appearance of this document is unlawful and offenders may be prosecuted to the fullest extent of the law. Unless otherwise stated the results shown in this test report refer only to the sample(s) tested.

Attention: To check the authenticity of testing/inspection report & certificate, please contact us at telephone: (86-755) 8207 1442, or email: CN.Doccheck@sgs.com

SGS (China) Inspection & Testing Services Co., Ltd.
Guangzhou Branch, Guangzhou Chemical Laboratory

198 Kezhu Road, Sciencetech Park, Guangzhou Economic & Technology Development District, Guangzhou, China 510663 t (86-20) 82155555 f (86-20) 82075113 www.sgs.com.cn
中国·广州·经济技术开发区科学城科珠路198号 邮编: 510663 t (86-20) 82155555 f (86-20) 82075113 e sgs.china@sgs.com

Test Report (SVHC)

No. CANEC1705363601

Date: 11 Apr 2017

Page 9 of 12

REMARK:

603 ZZ	623 ZZ	633 ZZ	681X ZZ	693 ZZ	R2 ZZ	F682 ZZ	MF52 ZZ	F2.5-6
604 ZZ	624 ZZ	634 ZZ	682 ZZ	694 ZZ	R3 ZZ	F683 ZZ	MF63 ZZ	F3-8
605 ZZ	625 ZZ	635 ZZ	682X ZZ	695 ZZ	R4 ZZ	F684 ZZ	MF74 ZZ	F4-9
606 ZZ	626 ZZ	636 ZZ	683 ZZ	696 ZZ	R6 ZZ	F685 ZZ	MF83 ZZ	F4-10
607 ZZ	627 ZZ	637 ZZ	684 ZZ	697 ZZ	R8 ZZ	F686 ZZ	MF84 ZZ	F5-10
608 ZZ	628 ZZ	638 ZZ	685 ZZ	698 ZZ	R10 ZZ	F687 ZZ	MF85 ZZ	F5-11
609 ZZ	629 ZZ	639 ZZ	686 ZZ	699 ZZ	R12 ZZ	F688 ZZ	MF95 ZZ	F5-12
6000 ZZ	6200 ZZ	6300 ZZ	687 ZZ	6900 ZZ	R14 ZZ	F689 ZZ	MF104 ZZ	F6-12
6001 ZZ	6201 ZZ	6301 ZZ	688 ZZ	6901 ZZ	R16 ZZ	F6800 ZZ	MF105 ZZ	F6-14
6002 ZZ	6202 ZZ	6302 ZZ	689 ZZ	6902 ZZ	R18 ZZ	F6801 ZZ	MF115 ZZ	F7-13
6003 ZZ	6203 ZZ	6303 ZZ	6800 ZZ	6903 ZZ	R20 ZZ	F6802 ZZ	MF106 ZZ	F7-15
6004 ZZ	6204 ZZ	6305 ZZ	6801 ZZ	6904 ZZ	R24 ZZ	F692 ZZ	MF126 ZZ	F7-17
6005 ZZ	6205 ZZ	6306 ZZ	6802 ZZ	6905 ZZ	R144 ZZ	F693 ZZ	MF117 ZZ	F8-16
6006 ZZ	6206 ZZ	6307 ZZ	6803 ZZ	6906 ZZ	R168 ZZ	F694 ZZ	MF128 ZZ	F8-19
6007 ZZ	6207 ZZ	6308 ZZ	6804 ZZ	6907 ZZ	R166 ZZ	F695 ZZ	MF137 ZZ	F8-22
6008 ZZ	6208 ZZ	6309 ZZ	6805 ZZ	6908 ZZ	R1810 ZZ	F696 ZZ	MF148 ZZ	F9-17
6009 ZZ	6209 ZZ	6310 ZZ	6806 ZZ	6909 ZZ	R188 ZZ	F697 ZZ	MF149 ZZ	F9-20
6010 ZZ	6210 ZZ	6300-2RS	6807 ZZ	6910 ZZ	R1212 ZZ	F698 ZZ	FR3 ZZ	F10-17
607-2RS	625-2RS	6301-2RS	6808 ZZ	6911 ZZ	R2-5 ZZ	F699 ZZ	FR4 ZZ	F10-18
608-2RS	626-2RS	6302-2RS	6809 ZZ	6912 ZZ	MR52 ZZ	F6900 ZZ	FR6 ZZ	F12-21
609-2RS	627-2RS	6303-2RS	6810 ZZ	6900-2RS	MR62 ZZ	F6901 ZZ	FR8 ZZ	F12-22
6000-2RS	628-2RS	6304-2RS	6811 ZZ	6901-2RS	MR72 ZZ	F6902 ZZ	FR144 ZZ	F12-23
6001-2RS	629-2RS	6305-2RS	6812 ZZ	6902-2RS	MR63 ZZ	F623 ZZ	FR168 ZZ	683
6002-2RS	6200-2RS	6306-2RS	6813ZZ	6903-2RS	MR93 ZZ	F624 ZZ	F63800 ZZ	684
6003-2RS	6201-2RS	6307-2RS	6814ZZ	6904-2RS	MR74 ZZ	F625 ZZ	62200-2RS	685
6004-2RS	6202-2RS	6308-2RS	6815ZZ	6905-2RS	MR83 ZZ	F627 ZZ	62201-2RS	686
6005-2RS	6203-2RS	6309-2RS	6816ZZ	6906-2RS	MR84 ZZ	F628 ZZ	62202-2RS	687
6006-2RS	6204-2RS	6310-2RS	6800-2RS	6907-2RS	MR85 ZZ	F629 ZZ	62203-2RS	688



Unless otherwise agreed in writing, this document is issued by the Company subject to its General Conditions of Service printed overleaf, available on request or accessible at <http://www.sgs.com/en/Terms-and-Conditions.aspx> and, for electronic format documents, subject to Terms and Conditions for Electronic Documents at <http://www.sgs.com/en/Terms-and-Conditions/Terms-a-Documents.aspx>. Attention is drawn to the limitation of liability, indemnification and jurisdiction issues defined therein. Any holder of this document is advised that information contained hereon reflects the Company's findings at the time of its intervention only and within the limits of Client's instructions, if any. The Company's sole responsibility is to its Client and this document does not exonerate parties to a transaction from exercising all their rights and obligations under the transaction documents. This document cannot be reproduced except in full, without prior written approval of the Company. Any unauthorized alteration, forgery or falsification of the content or appearance of this document is unlawful and offenders may be prosecuted to the fullest extent of the law. Unless otherwise stated the results shown in this test report refer only to the sample(s) tested.

Attention: To check the authenticity of testing/inspection report & certificate, please contact us at telephone: (86-755) 9307 1443, or email: CN.Doccheck@sgs.com

198 Kazhu Road, Scientific Park Guangzhou Economic & Technology Development District, Guangzhou, China 510663 | (86-20) 82155555 | (86-20) 82075113 | www.sgs.com | sgs.china@sgs.com
 中国·广州·经济技术开发区科学城科珠路198号 邮编: 510663 | (86-20) 82155555 | (86-20) 82075113



**Test Report
(SVHC)**

No. CANEC1705363601

Date: 11 Apr 2017

Page 10 of 12

6007-2RS	6205-2RS	6311-2RS	6801-2RS	6908-2RS	MR95 ZZ	F604 ZZ	62204-2RS	689
6008-2RS	6206-2RS	6312-2RS	6802-2RS	6909-2RS	MR104 ZZ	F605 ZZ	16001 ZZ	MR128
6009-2RS	6207-2RS	6211-2RS	6803-2RS	6910-2RS	MR105 ZZ	F606 ZZ	16002 ZZ	MR106
6010-2RS	6208-2RS	6212-2RS	6804-2RS	6911-2RS	MR115 ZZ	F607 ZZ	16003 ZZ	MR74
6011-2RS	6209-2RS	6213-2RS	6805-2RS	6912-2RS	MR106 ZZ	F608 ZZ	63800 ZZ	MR85
6012-2RS	6210-2RS	6214-2RS	6806-2RS	F634 ZZ	MR126 ZZ	F609 ZZ	63801 ZZ	MR63
LM3UU	LM4UU	LM5UU	6807-2RS	F635 ZZ	MR117 ZZ	F6000 ZZ	63802 ZZ	MR95
LM6UU	LM8UU	LM10UU	6808-2RS	F636 ZZ	MR137 ZZ	F6001 ZZ	2085	MR84
16000ZZ	16000-2RS	1601-2RS	6809-2RS	F6903ZZ	MR128 ZZ	F6803ZZ	F6804ZZ	F6805ZZ
16001ZZ	16001-2RS	1602-2RS	6810-2RS	F6700 ZZ	MR148 ZZ	F6905ZZ	F6906ZZ	F16004ZZ
16002ZZ	16002-2RS	1603-2RS	6811-2RS	16100 ZZ	MR149 ZZ	F63800ZZ	62800ZZ	62900ZZ
16003ZZ	16003-2RS	1604-2RS	6812-2RS	16101 ZZ	F6904ZZ	6700-2RS	6705ZZ	6705-2RS
16004ZZ	16004-2RS	1605-2RS	6813-2RS	1607 ZZ	F6701ZZ	6701-2RS	6706ZZ	6706-2RS
16005ZZ	16005-2RS	1606-2RS	6814-2RS	1601-2RS	6700ZZ	6702-2RS	6707ZZ	6707-2RS
16006ZZ	16006-2RS	1607-2RS	6815-2RS	1602-2RS	6701ZZ	6703-2RS	6708ZZ	6708-2RS
16007ZZ	16007-2RS	1614-2RS	6816-2RS	1603-2RS	6702ZZ	6704-2RS	6709ZZ	6709-2RS
	V623ZZ	1614 ZZ	1601 ZZ	1604-2RS	6703ZZ			
	V624ZZ		1602 ZZ	1605-2RS	6704ZZ			
	U624ZZ		1603 ZZ	1606-2RS				
	U1804ZZ		1604 ZZ					
	U694ZZ		1605 ZZ					
			1606 ZZ					



Unless otherwise agreed in writing, this document is issued by the Company subject to its General Conditions of Service printed overleaf, available on request or accessible at <http://www.sgs.com/en/Terms-and-Conditions.aspx> and, for electronic formal documents, subject to Terms and Conditions for Electronic Documents at <http://www.sgs.com/en/Terms-and-Conditions/Terms-e-Documents.aspx>. Attention is drawn to the limitation of liability, indemnification and jurisdiction issues defined therein. Any holder of this document is advised that information contained hereon reflects the Company's findings at the time of its intervention only and within the limits of Client's instructions, if any. The Company's sole responsibility is to its Client and this document does not exonerate parties to a transaction from exercising all their rights and obligations under the transaction documents. This document cannot be reproduced except in full, without prior written approval of the Company. Any unauthorized alteration, forgery or falsification of the content or appearance of this document is unlawful and offenders may be prosecuted to the fullest extent of the law. Unless otherwise stated the results shown in this test report refer only to the sample(s) tested.

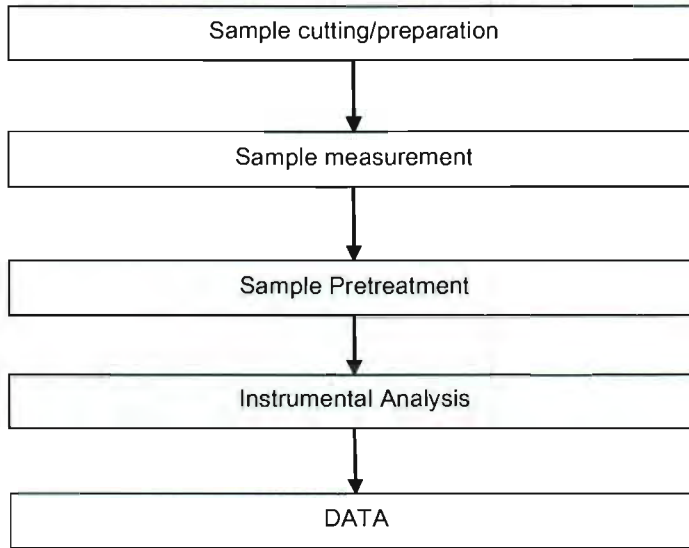
Attention: To check the authenticity of testing/inspection report & certificate, please contact us at telephone: (86-755) 8307 1443, or email: CN.Descheck@sgs.com

198 Kazhu Road, Sciencetech Park Guangzhou Economic & Technology Development District, Guangzhou, China 510663 | (86-20) 82155555 | (86-20) 82075113 | www.sgs.com.cn
 中国·广州·经济技术开发区科学城科珠路198号 | 邮编: 510663 | (86-20) 82155555 | (86-20) 82075113 | e: sgs.china@sgs.com

ATTACHMENTS

SVHC Testing Flow Chart

- 1) Name of the person who made testing: Hogan Lv / Iris Zhong
- 2) Name of the person in charge of testing: Lireny Liu



Unless otherwise agreed in writing, this document is issued by the Company subject to its General Conditions of Service printed overleaf, available on request or accessible at <http://www.sgs.com/en/Terms-and-Conditions.aspx> and, for electronic format documents, subject to Terms and Conditions for Electronic Documents at <http://www.sgs.com/en/Terms-and-Conditions/Terms-e-Document.aspx>. Attention is drawn to the limitation of liability, indemnification and jurisdiction issues defined therein. Any holder of this document is advised that information contained hereon reflects the Company's findings at the time of its intervention only and within the limits of Client's Instructions, if any. The Company's sole responsibility is to its Client and this document does not exonerate parties to a transaction from exercising all their rights and obligations under the transaction documents. This document cannot be reproduced except in full, without prior written approval of the Company. Any unauthorized alteration, forgery or falsification of the content or appearance of this document is unlawful and offenders may be prosecuted to the fullest extent of the law. Unless otherwise stated the results shown in this test report refer only to the sample(s) tested.

Attention: To check the authenticity of testing/inspection report & certificate, please contact us at telephone: (86-755) 8307 1443, or email: CN_Doccheck@sgs.com

SGS (Shanghai) Scientific Services Co., Ltd.
Elevated Beach Road, Singapore Chemical Laboratory

198 Kazhu Road, Science Park Guangzhou Economic & Technology Development District, Guangzhou, China 510663 t (86-20) 82155555 f (86-20) 82075113 www.sgs.com.cn
中国·广州·经济技术开发区科学城科珠路198号 邮编: 510663 t (86-20) 82155555 f (86-20) 82075113 e sgs.china@sgs.com

Test Report (SVHC)

No. CANEC1705363601

Date: 11 Apr 2017

Page 12 of 12

Sample photo:



SGS authenticate the photo on original report only

*** End of Report ***



Unless otherwise agreed in writing, this document is issued by the Company subject to its General Conditions of Service printed overleaf, available on request or accessible at <http://www.sgs.com/en/Terms-and-Conditions.aspx> and, for electronic formal documents, subject to Terms and Conditions for Electronic Documents at <http://www.sgs.com/en/Terms-and-Conditions/Terms-e-Documents.aspx>. Attention is drawn to the limitation of liability, indemnification and jurisdiction issues defined therein. Any holder of this document is advised that information contained hereon reflects the Company's findings at the time of its intervention only and within the limits of Client's instructions, if any. The Company's sole responsibility is to its Client and this document does not exonerate parties to a transaction from exercising all their rights and obligations under the transaction documents. This document cannot be reproduced except in full, without prior written approval of the Company. Any unauthorized alteration, forgery or falsification of the content or appearance of this document is unlawful and offenders may be prosecuted to the fullest extent of the law. Unless otherwise stated the results shown in this test report refer only to the sample(s) tested.

Attention: To check the authenticity of testing inspection report & certificate, please contact us at telephone: (86-755) 8307 1443, or email: CN.Quecheck@sgs.com

198 Kezhu Road, Science Park Guangzhou Economic & Technology Development District, Guangzhou, China 510663 t (86-20) 82155555 f (86-20) 82075113 www.sgs.com.cn
中国·广州·经济技术开发区科学城科珠路198号 邮编: 510663 t (86-20) 82155555 f (86-20) 82075113 e sgs.china@sgs.com